

Theatre *for the* performing arts

SOUTH FLORIDA STATE COLLEGE

2015



Technical
Package





Table of Contents

General	Below
Dressing Rooms.....	Pages 3 and 9
Stage Measurements	Below, pages 3 and 10
Orchestra Pit	Pages 3 and 10
Loading Area.....	Pages 3 and 10
Line Chart	Page 4
Lighting and Electrics	Pages 4, 6 and 11
Sound System.....	Page 5
Contact Information.....	Pages 7 and 8
Local Amenities.....	Page 7
Map and Directions	Page 8
Stage Diagrams	Pages 10 and 11

2010 marked the beginning of a new era for the *former* South Florida Community College auditorium. Originally built in 1978, a major building renovation, which began in April of 2009, was completed in February of 2010. The new facility and its new name were revealed. The fly space over the stage was raised to 53'. A balcony, box seats and tri-level lobbies were added. We also added a line array audio system and new lighting equipment. The room seats 1460 with the orchestra pit and road mix position in their "seated" configurations. A total of 18 wheel chair spaces, 18 companion seats and 16 ADA spaces are included in this number.

The proscenium opening is 59' wide x 24' tall. The hardwood stage is painted black. As a rule no screws, nails or other invasive fasteners are to be used. There is a small shop with storage space backstage. The production office, dressing rooms, wardrobe room, green room and catering are located just off stage right in the hallway.

When adequately staffed, the lobby areas open to the audience approximately 45 minutes prior to the advertised start time. The seating areas open no less than 30 minutes prior to the advertised start time. Lobby and house openings are dependent upon readiness of the production, staff and ushers. Ushers are required for all events. Food and drink concessions are provided for many College sponsored events, though no food or drink is allowed into the seating area at any time. Limited tables and chairs may be available for lobby use if requested in advance. No aisles, rows or means of egress may be blocked or obstructed at any time.

Sound, lights and video are operated from the control booth 80' from the down center edge of the stage. The road mix position is an area just house left of center, up to 8' deep x 12' wide, 78' from the down center edge and at the rear of the main seating area. Cables are pulled under the floor. A 150' snake is sufficient. The use of the road mix position must be requested well in advance as seats must be killed and removed. It is sometimes necessary for building management to provide input regarding the overall show volume.

Video screens, flat panel TVs and a 70 volt speaker system allow for the live event, video presentations and limited advertising to be seen and heard throughout the facility. Non-secured, wireless "guest" internet service is available. Facility use or rental does not necessarily include all that is outlined in this or in other SFSC documents.

STAGE MEASUREMENTS

2' 6" Audience floor to stage deck
96' Wall to wall width (architectural obstructions on extreme left, right and back walls)
Proscenium opening: 59' wide x 24' high
Stage right wing: 18' with 16' OH clearance, audio rack lives DS, storage cabinets along SR wall
Stage left wing: 14' wide with 16' OH clearance, fly rail is along SL wall
Lighted upstage crossover: 3' (when furthest US line set is used)
Apex of curved apron to fire curtain: 9' 6", 7' 6" deep @ 20' off center
Stage depth from plaster line to furthest US line set: 30'
Stage level "walkways" to audience from DSR and DSL

LOADING AREA

Located on the north side of the building
10' deep x 8' wide hydraulic lift is stage and street level
Tour ramps may also be used
12' wide x 11' high, load-in door to shop, street and stage level
10' wide x 12' high, interior fire door from shop to stage
Parking at loading area for up to 2 trucks and 2 busses (one centered at the door at a time)
Two, 220 volt, 50 amp shore power outlets (NEMA 14-50 type)

ORCHESTRA PIT

Use of the orchestra pit impacts ticket sales and is labor intensive and therefore must be discussed well in advance.

Pit: 39' long, 3' wide @ extreme left & right ends (where stairs will be placed) and 8' 6" wide @ apex

DRESSING AREAS

Guest Wireless Internet Available

Audio or video monitoring and paging systems must be requested and confirmed during booking or advance process.

- 2 - Star dressing rooms with private ADA compliant showers and toilets, dressing tables, telephone and seating areas
- 2 - Ensemble rooms with make-up mirrors, running water, seating and counter space for up to 18 people per room
- 1 - Additional space which seats up to 10, no running water
- 1 - Additional space which seats up to 6, no running water
- 1 - Green Room
- 1 - Production office with desk, telephone
- 1 - Wardrobe room with washer and dryer, 2 irons, 2 ironing boards, 2 steamers, 4 rolling wardrobe racks
- 2 - Large ADA compliant restrooms with multiple showers

FLY SYSTEM (53' High Trim All Pipes)

Stage left, single purchase, "J" track with mid-bridge and loading gallery above
Main curtain and valance are dark red velour, 75% added fullness, main curtain will fly or travel
Mid-stage traveler, black, two pieces @ 34' wide x 26' tall, 50% added fullness, mid-stage traveler will also fly
Four sets of black legs: 10' wide x 26' tall, sewn flat
Four black borders: 65' wide x 8' tall, sewn flat
Rear black drop: one piece, 65' wide x 26' tall, sewn flat
White cyclorama: 65' wide x 26' tall
Walking grid over stage, mid-level catwalk surrounding stage
Rigging points @ wells which are @10', 20' 30 off stage

LINE SET SCHEDULE

Line Set #	Labeled As	US of Fire Curtain	Low Trim	High Trim	9' Arbors Capacity In Pounds	Description (Wide x Tall)
N/A	Fire Curtain	0'	N/A	N/A	N/A	Framed
1	Valance Red	1' 4"	4' 10"	53'	1800	65' x 3'
2	Main Red	2'	4' 10"	53'	1800	Fly / Travel, 68' x 26'
3	OH Microphones	2' 8"	4' 10"	53'	1800	Semi-permanent
4		3' 4"	4' 10"	53'	1800	
5		4'	4' 10"	53'	1800	
6	# 1 Border	4' 8"	4' 10"	53'	1800	65' x 8'
7	#1 Legs	5' 4"	4' 10"	53'	1800	10' x 26'
8		6'	4' 10"	53'	1800	
9		6' 8"	4' 10"	53'	1800	
10		7' 4"	4' 10"	53'	1800	
11	# 2 Border	8'	4' 10"	53'	1800	65' x 8'
12	# 2 Legs	8' 8"	4' 10"	53'	1800	10' x 26'
13		9' 4"	4' 10"	53'	1800	
14		10' 8"	4' 10"	53'	1800	
15		11' 4"	4' 10"	53'	1800	
16		12'	4' 10"	53'	1800	
17		12' 8"	4' 10"	53'	1800	65' x 8'
18	# 3 Border	13' 4"	4' 10"	53'	1800	10' x 26'
19	# 3 Legs	14'	4' 10"	53'	1800	
20		14' 8"	4' 10"	53'	1800	
21		15' 4"	4' 10"	53'	1800	
22		16'	4' 10"	53'	1800	
23		16' 8"	4' 10"	53'	1800	
24		17' 4"	4' 10"	53'	1800	
25	# 4 Border	18'	4' 10"	53'	1800	60' x 6'
26	# 4 Legs	18' 8"	4' 10"	53'	1800	10' x 26'
27		19' 4"	4' 10"	53'	1800	
28	Mid-Stage	20' 8"	4' 10"	53'	1800	Fly / Travel, 68' x 26'
29		21' 4"	4' 10"	53'	1800	
30		22'	4' 10"	53'	1800	
31		22' 8"	4' 10"	53'	1800	
32	# 5 Border	23' 4"	4' 10"	53'	1800	60' x 8"
33	# 5 Legs	24'	4' 10"	53'	1800	10' x 26'
34		24' 8"	4' 10"	53'	1800	
35		25' 4"	4' 10"	53'	1800	
36	Black Scrim	26'	4' 10"	53'	1800	Fly, 65' x 26'
37	White Scrim	26' 8"	4' 10"	53'	1800	Fly, 65' x 26'
38		27' 4"	4' 10"	53'	1800	
39		28'	4' 10"	53'	1800	
40		28' 8"	4' 10"	53'	1800	
41	Rear Black	29' 4"	4' 10"	53'	1800	Fly, 65' x 26'
42	Rear Red	30'	4' 10"	53'	1800	Flat, 1 piece, 65' x 26'

*All battens are 65' long. All legs, borders and mid-traveler are black.
 Legs, borders and scrims can be relocated. No curtain tracks will be removed.
 The main, mid-stage and 2 rear curtains will not be removed.*

MEYER SOUND - Line Array

Speaker Boxes

- 10 - Meyer Mica and 2 Meyer HP 700 HL, flown
- 10 - Meyer Mica and 2 Meyer HP 700 HR, flown
- 4 - Meyer HP 700 under stage apron
- 5 - Meyer Junior cabinets as front fill on down stage apron
- 6 - RCF 3002 SMA monitor wedges, 40 x 60 wide dispersion, 1 x 12" with 2" driver
- 7 - RCF NX SMA monitor wedges, 60 x 60 dispersion, 1 x 12" with 1.7" kapton dome

Processing & Outboard Gear

- 1 - Yamaha PM 5D digital console
 - 1 - Meyer Sound Galileo 616 processor
 - 1 - Tascam CD-RW901SL CD recorder / player
 - 1 - Tascam 112B cassette deck
 - 1 - Tascam CD 401 CD player
 - 12 - HME / Clearcom headsets
 - 10 - Dedicated 20 amp twist lock audio / backline circuits on stage (cabling with quad boxes and duplexes available)
- William's Sound FM hearing impaired system, requires line out for ADA compliance.
- Paging system available, but must be requested and confirmed during the booking or advance process
- Tour audio power (company switch) UC with cams: 1 x 200 amp, 3 phase

Microphones

- 12 - Shure SM58 (4 with switches)
 - 8 - Sennheiser wireless handhelds w/Beta 58 style heads (four lavalier style elements as alternates)
 - 4 - Shure SM81
 - 2 - Shure SM91
 - 3 - Shure 5655D
 - 1 - Shure Beta 52
 - 11 - Shure Beta 58
 - 3 - Beta 56
 - 7 - Shure Beta 57
 - 7 - Shure SM57
 - 4 - Audio Technica AT857QM
- Direct boxes: 4 - Countryman, 2 - Whirlwind Director, 1 - Rapco, 2 - Behringer Ultra
- Various microphone stands, clips, cables, adapters, sub-snakes, etc.

BACKLINE

- 1 - Steinway Model "D" Grand piano
 - 1 - Roland JC 120 Guitar amplifier
 - 1 - Eden WT300 Bass amplifier and 1- Eden 4 x 10 Cabinet
 - 1 - Sonor S Class drum kit: 10", 12", 13", 16" toms, 14" snare, 22" kick, various hardware and Zildjian and Paiste cymbals
 - 1 - Clearsonic drum shield
- 150 - Black, padded, armless chairs

VIDEO SYSTEM

- 1 - Vaddio Production View HD MV Switcher and Touchscreen
 - 2 - LX 1000 Christie Projectors with LNS T03 long throw lenses
 - 3 - Vaddio Clearview CCU Robotic Cameras
 - 1 - Tascam DV-DO1U DVD player
 - 1 - Samsung DVD - V9800 (DVD / VHS player)
- All other necessary components and cabling

LIGHTING SYSTEM

Console & Dimming

ETC Eos controller with 2 touch screens

2 - Auxiliary flat panel monitors

1 - Wireless Remote Focus Unit

244 - 2.4 k ETC Sensor dimmers

ETC Insight with emphasis as back-up controller available

House lights dim via console or separate controller

Instrument Inventory

10 - ETC 10 degree Source Fours installed on balcony rail @ 10' above audience floor (575 watts)

12 - ETC 19 degree Source Fours installed on HL box booms (575 watts)

12 - ETC 19 degree Source Fours installed on HR box booms (575 watts)

5 - ETC 10 degree Source Fours installed on far FOH catwalk (575 watts)

24 - ETC 19 degree Source Fours (575 watts)

30 - ETC 19 degree Source Fours installed on mid FOH catwalk (575 watts)

4 - ETC 19 degree Source Fours installed on near FOH catwalk as pit wash (575 watts)

47 - ETC 19 degree Source Fours (575 watts)

20 - ETC 26 degree Source Fours (575 watts)

20 - ETC 36 degree Source Fours (575 watts)

64 - PAR 64s (various 1000 watt lamps available)

4 - Four bars of PAR 64s (various 1000 watt lamps available)

6 - 3 cell L&E Broad Cyc units (1000 watts per cell)

6 - 1 cell L&E Broad Cyc units (1000 watts per cell)

16 - Altman Spectra Cyc 100 R, G, B, A LED fixtures

6 - RGB LED units 36 watts, 3 each mounted on two 3-bars

6 - Martin Mac 700 Profiles

6 - Martin TW1 Wash

4 - Lycian 1.2k Superstar follow spots in far FOH catwalk @ 24' from DC edge and approximately 45 degree angle

1 - ETC Source Four Follow Spot in control booth for seating area pick-ups (Lycians will not hit the seating area)

1 - Lemaitre Water Based Radiance Hazer

4 - 8' Trees with assorted boom arms

4 - ETC Source Four 50 degree lens tubes

Gels, cables, adapters for stage pin, twist lock, Edison, 26' skyjack, ladders, various gobos, 10 barn doors for 7.5" frames

Electrics

Multi-cable drops available as required, time and budget permitting

All dimmable circuits are stage pin, all non-dims are twist lock

Lighting network, DMX and non-dims appear throughout the facility

Tour lighting power (company switch) UC with cams: 1 x 600 amp, 3 phase

MISCELLANEOUS

14 - Rolling, counter weighted acoustic shells (off white, 6' wide each)

12 - Curved, 3-step, choral risers

24 - 4' x 8' riser decks with black, cloth skirting, legs heights: 8", 16", 24", 32", 40"

70 - Music stands, 20 music stand lights

CONTACT INFORMATION

Visit our website: www.southflorida.edu then click on Cultural Programs and follow the links....

Technical Director: John Snow, Interim TD
snowj@southflorida.edu
Office: 863-784-7193
Cell: 863-835-1295

Facility Booking: Lorrie Smith 863.784.7201
lorrie.smith@southflorida.edu

Director, Cultural Programs: Cindy Garren 863.784.7177
garrenc@southflorida.edu

Departmental FAX: 863.784.7190 (Please specify recipient's name on cover page)

Box Office: 863.784.7178

Production Office: Available once on site DOS

Dressing Rooms: Available once on site DOS

LOCAL OFF-CAMPUS AMENITIES

Hospitals: Florida Hospital: 4200 Sun 'N Lakes Blvd., Sebring, 863.314.4466

Physician: Dr. Ray Tangunan: 6801 US 27 North, Sebring, 863.314.8440

Orthopedist: Dr. Ashok Sonni: 6325 US 27 North, Sebring, 863.385.2222

Dentist: Dr. William Chen (Dentist): Avon Park, 863.452.2049

Chiropractor: Dr. Patrick Danzey: 1590 US 27 North Avon Park, 863.453.5777

Podiatrist: Dr. Olga Garcia Luepschen: 2 Ryant Blvd. Sebring, 863.314.9255

Fitness: Gold's Gym: (South) 1720 US 27 North, Sebring, 863.382.9400
Anytime Fitness: (North) 906 US 27 North, Avon Park, 863.784.0478
SFSC Athletic Department exercise equipment available when arrangements are made

Pharmacies: CVS: 2728 110 West Main St, Avon Park, 863.453.7505
Walgreen's: 93 US 27 South, Avon Park, 863.453.0222

Lodging: Hotel Jacaranda: 19 East Main St, Avon Park, 863.453.2211, limited parking, laundry
Econo Lodge: 2511 US 27 Avon Park, 863.453.2000, ample parking, laundry
Quality Inn & Suites: 6525 US 27 North Sebring, 863.385.4500, free breakfast, ample parking, laundry
Inn On The Lakes: 3100 Golfview Road Sebring, 863.471.9400, after hours dining available when arrangements are made, ample parking, laundry
Residence Inn: 3221 Tubbs Road Sebring, 863.314.9100, limited parking, breakfast, laundry

Restaurants: Outback Steakhouse: 921 US 27 North, Sebring, 863.385.4329
Olympic: 504 US 27 North Avon Park, 863.452.2700

Banks: Bank of America: 4215 Sebring Parkway, Sebring, 863.382.3028

Dry Cleaners: Griffin's Dry Cleaning: 1095 West Main St. Avon Park, 863.453.9696

Taxi: Highlands Yellow Cab: 863.382.6119

Websites: Sebring Chamber of Commerce: www.sebring.org
Avon Park Chamber of Commerce: www.apfla.com
Lake Placid Chamber of Commerce: www.lpfla.com

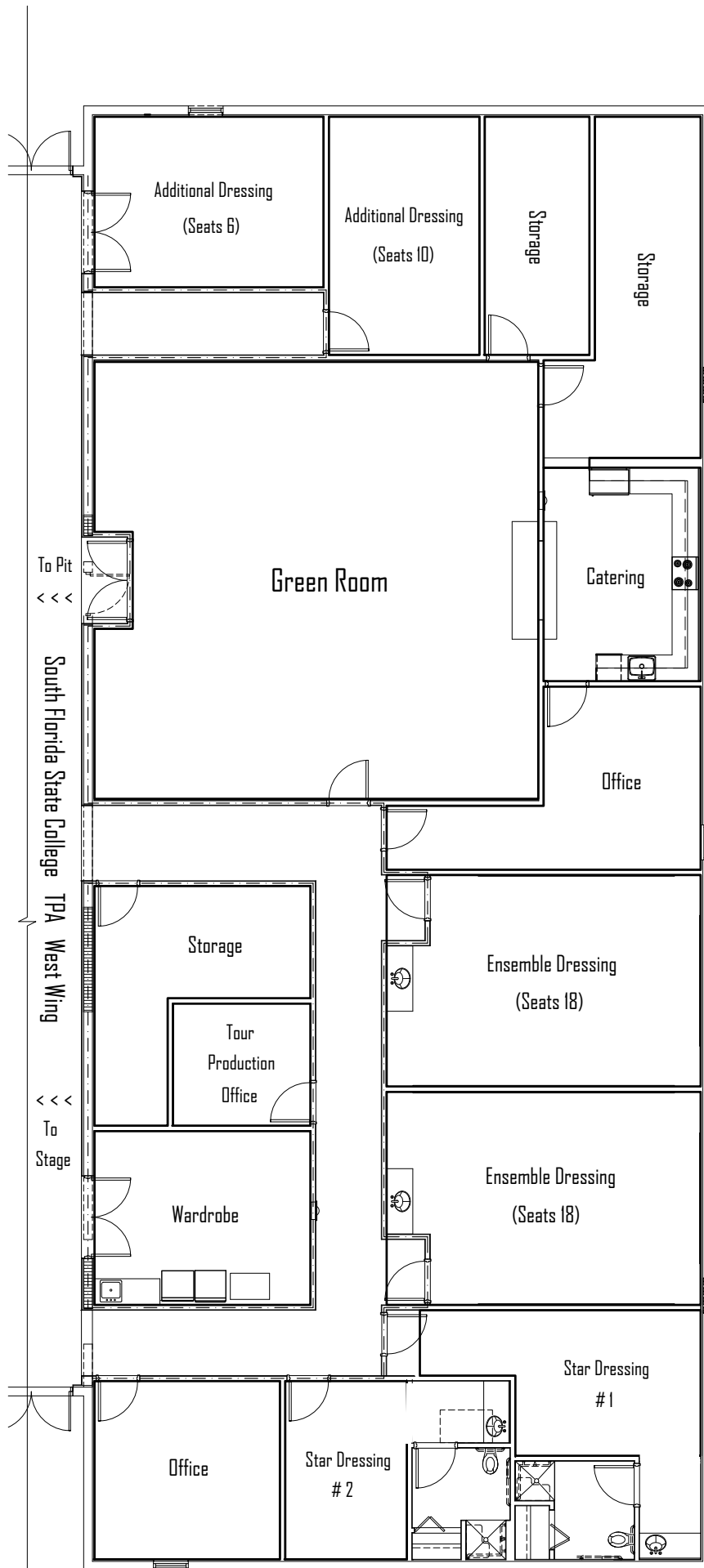
DIRECTIONS

The SFSC Theatre for the Performing Arts (TPA) is located on US 27 just south of Avon Park. Use a trusted resource to find US 27, which is west of Orlando, trace US 27 south from its intersection with I-4 (Haines City) to the Avon Park area.

The Theatre for the Performing Arts is visible from a distance and from the intersection of US 27 and College Drive. As you approach the intersection (traffic light) of US 27 & College Drive turn east onto College Drive, take the second right, go straight ahead toward the TPA load-in area (large roll up door on north side). Please be aware that there are ADA and reserved spaces. Passenger vehicles can park to the left and right. Trucks and busses may park in the loading area.

600 West College Drive, Avon Park, FL 33825-9356
DAY OF SHOW EMERGENCY 863.453.0806 OR 863.835.0148





North

1, 2, 3, ND 1

4, 5, 6, ND 2

7, 8-FS 9, ND 3 Cam

10, 11, 12, ND 4

13, 14, 15, ND 5

Five Balcony Rail Positions are 78' from DSC @ 6' above stage deck

Far FOH Position 24' from DSC @ 45 degrees

a b c d a b c d a b s p c s p d s p s p d s p c s p b a d c b a d c b a
 40,41,42,43 44,45,46,47 48,49 50,51,52,53,54 C/L 55,56,57,58,59 60,61 62,63,64,65 66,67,68,69
 ND 14 ND 15 ND 16 ND 17 ND 18 ND 19

Mid FOH Position 12' from DSC @ 25 degrees

a b c d a b c d a b c d s p s p d c b a d c b a d c b a
 (70,71) 72,73,74,75, 76,77,78,79 80,81,82,83,84 C/L 85,86,87,88,89 90,91,92,93, 94,95,96,97 (98,99)
 ND 20 ND 21 ND 22 ND 23 ND 24 ND 25

Near FOH Position 6' from DSC @ 15 degrees

100,101,102,103,104,105,106,107,108,109 110,111,112,113,114 C/L 115,116,117,118,119 120,121,122,123,124,125,126,127,128,129
 ND 26 ND 27 ND 28 ND 29 ND 30 ND 31

Hi - 16, 17, 18, ND 6

Lo - 19, 20, 21, ND 7 Cam

HR Box Boom Positions

Hi Box Bms are 18' above stage deck
 Lo Box Bms are 9' above stage deck
 Near Box Bms are 12' from DSC edge
 Far Box Bms are 28' from DSC edge

Lo - 31, 32, 33, ND 11 Cam

Hi - 28, 29, 30, ND 10

HL Box Boom Positions

PIT 268, 269, 270

ND 56

DSL 271 - 273, ND 57, 58

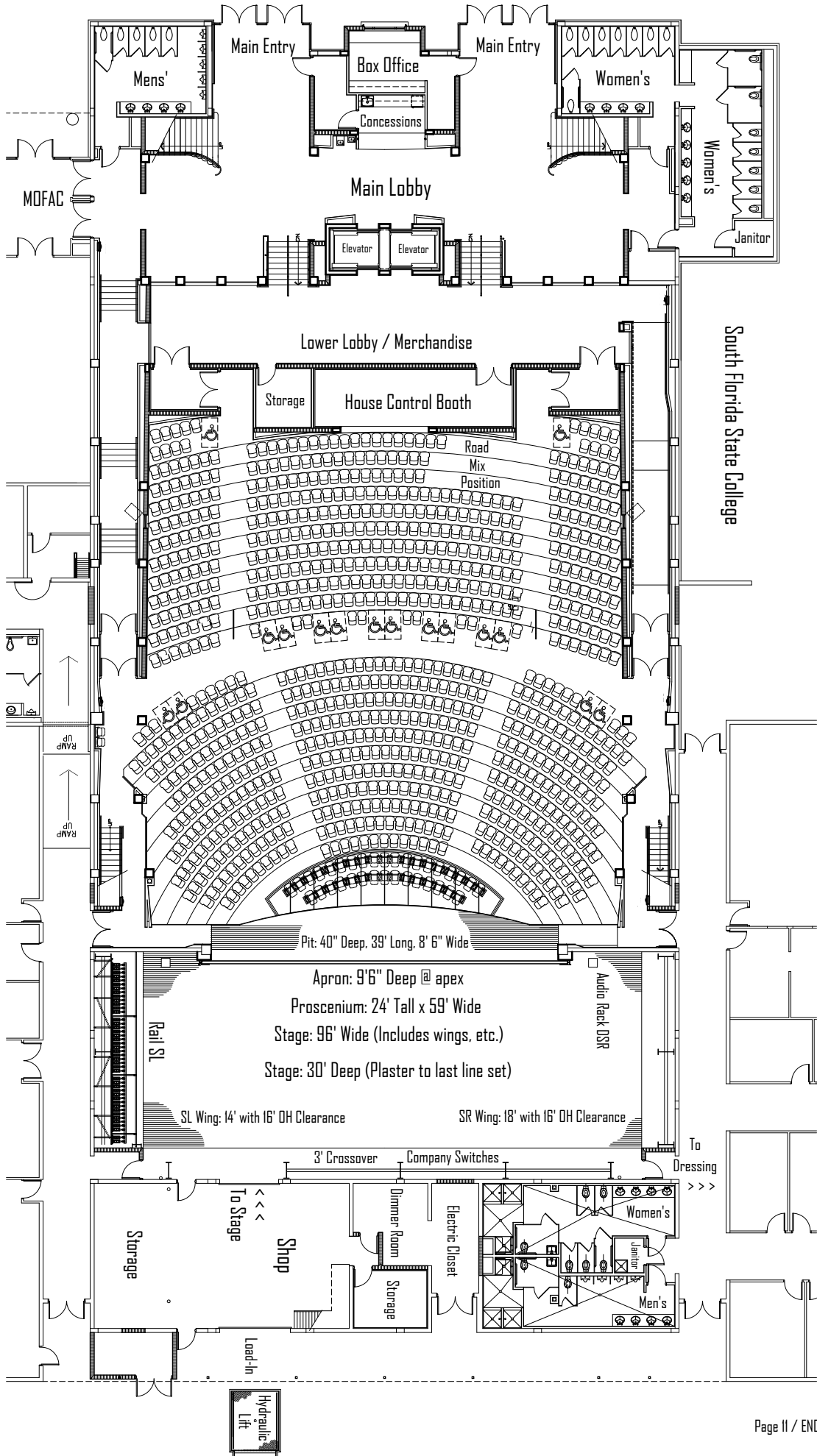
DSR 274 - 276, ND 59, 60

I LX 130,131,132,133,134,135,136,137,138,139,140,141,142,143,144, 145, 146,147,148,149,150,151,152,153,154,155,156,157,158,159

DMX = SL Grid DS 154 - 159, 148 - 153, 142 - 147,
 136 - 141, 130 - 135, ND 32 - 35
 DMX = SL Grid MSD 178 - 183, 172 - 177, 166 - 171,
 160 - 165, ND 36 - 39
 DMX = SL Grid MSU 202 - 207, 196 - 201, 190 - 195,
 184 - 189, ND 40 - 43
 DMX = SL Grid US 232 - 237, 226 - 231, 220 - 225,
 214 - 219, 208 - 213, ND 44 - 47

DMX = SR Grid DS 238 - 243, 244 - 249, ND 48, 49
 DMX = SR Grid MSD 250 - 255, ND 50, 51
 DMX = SR Grid MSU 256 - 261, ND 52, 53
 DMX = SR Grid US 262 - 267, ND 54, 55

DH CKTS 130 - 267



South Florida State College